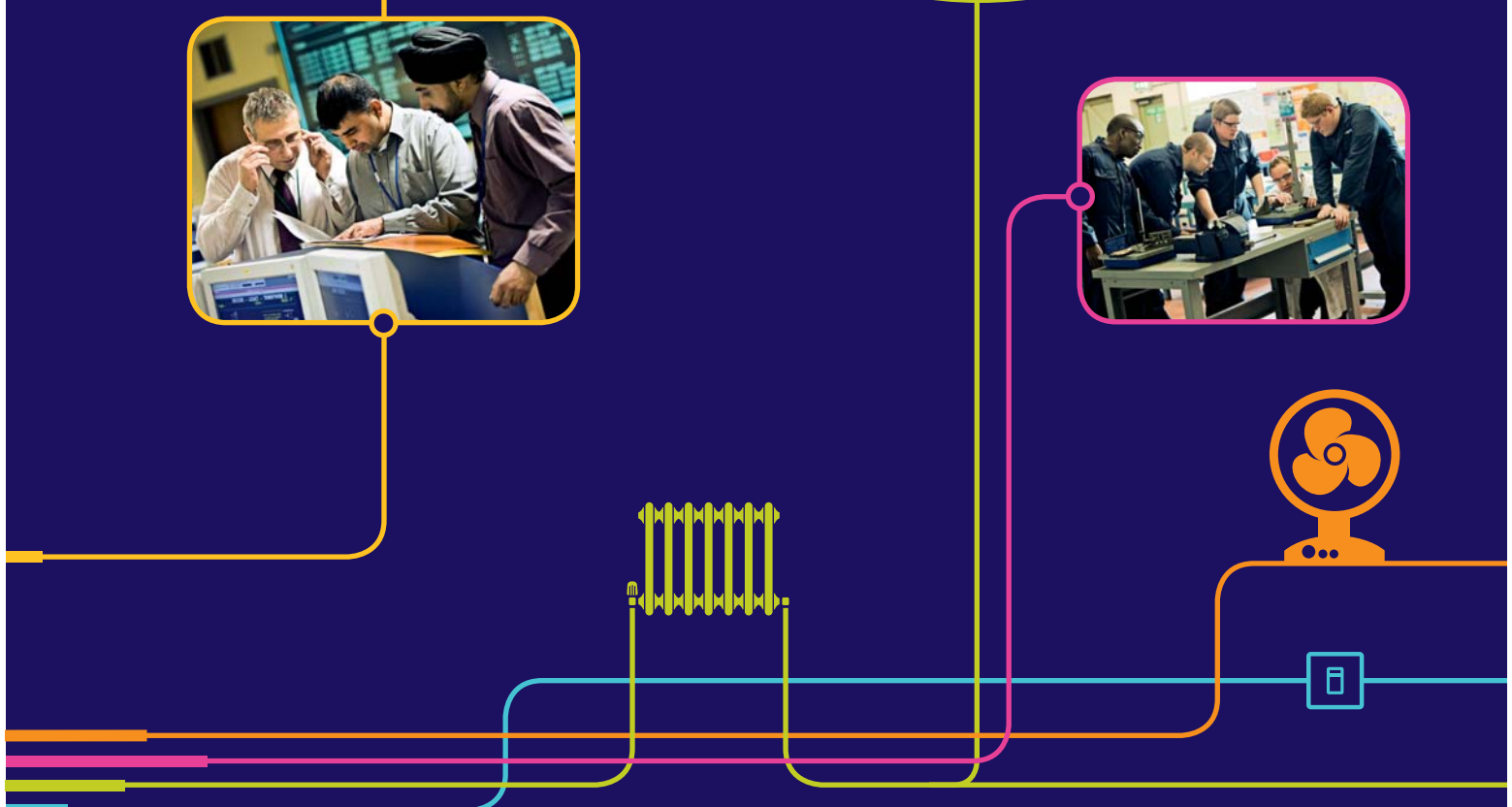
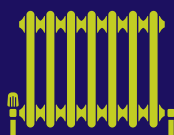


**Be the
source**

**Training
Opportunities
Connecting
students
with energy**



National Grid's Student Programmes

National Grid is one of the world's largest utility companies, playing a vital role in the supply of gas and electricity in the UK and USA.

In order to encourage new talent into our organisation we offer a range of different programmes designed to train and develop individuals in a range of opportunities ensuring we have the right people with the right skills when we need them.

Programme	Salary	Duration	Requires a degree in	Training provided	Progression	Opportunities
Year in Industry	9/12 months paid placement £12,500 (pro rata) 4 day development workshop	9/12 month placement 4-day development workshop. Starts between June and August and finishes the following year	Electrical, Electronic, Mechanical Engineering / IT (ITMB) / Business and Computing / Business and Engineering	Backed by the Government as part of the Royal Academy of Engineering, this programme is designed for students who decide to take a year out. You will be working in a specific area of our business, working on live projects with experienced people	If you have delivered excellent performance during your placement you will be invited to attend an Assessment Centre for Sponsorship and in your final year for the Graduate Development Programme	Gain valuable experience and skills to take forward in your future career
Industrial Placement	£15,600 (pro rata) paid placement	Year long placement	Commercial disciplines Quantity Surveying, Business Studies, Management, Economics, Applied Maths, Statistics, Geography, Finance, Accounting, Law, Information Technology Management for Business (ITMB), Business and Computing, Computing, Software, Town Planning, Town Management Technical disciplines Electrical, Electronic, Electrical and Electronic Engineering, Mechanical Engineering, Civil Engineering, Physics, Applied Maths	During your year-long placement you will be placed with one of our Businesses where you will develop hands-on experience and gain a feel for different types of work in a large organisation	Invitation to attend an Assessment Centre for our Graduate Development Programme at the start of your final year	Engineering; Commercial; Finance
Interns	£15,600 (pro rata) paid placement	12/14 week placement during the summer of your penultimate year at university	Electrical, Electronic, Mechanical, Civil Engineering / IT (ITMB) / Business and Computing	Before you start we will contact you to discuss your project to ensure you have the best development experience possible. You may be asked to work anywhere in the UK	If you have delivered excellent performance during your placement you will be invited to attend an Assessment Centre at the start of your final year for the Graduate Development Programme	Excellent opportunity to see inside National Grid and see if we are the company for you
Power Academy Scholarship Programme	£15,000 (pro rata) Bursary / book allowance / contribution towards fees	8-week summer placement	Electrical, Electronic, Electrical & Mechanical, Mechatronics Engineering or a Power Systems Engineering degree from one of the partner universities: Bath, Cardiff, Imperial College, Manchester, Queen's University (Belfast), Southampton and Strathclyde		Invitation to attend an Assessment Centre for our Graduate Development Programme at the start of your final year	Sponsorship throughout your degree
Sponsored Students	£15,600 (pro rata) Bursary / book allowance	8-week summer placement	Any of the above	Placements are structured with clear objectives and closely monitored by your line manager, helping to continuously develop your career skills	Invitation to attend an Assessment Centre for our Graduate Development Programme at the start of your final year	Sponsorship throughout your degree

National Grid's Development Programmes

Programme	Salary	Duration	What we look for	Training provided	Progression	Opportunities
Graduates	£24,750 for bachelors or £25,750 for masters, £2,000 Welcome payment	18 month development programme 3 x 6 month placements	Technical programme: 2:2 Degree or above in Electrical, Electronic, Mechanical, Civil, Chemical Engineering or Applied Maths. Commercial Programme 2:1 or above in: Engineering subjects as above; Physics, Applied Maths; Business Studies, Management, Economics, Geography, Law, Biology, Chemistry, History, English, ITMB, Business & Computing, Quantity Surveying, Property & Real Estate	The 18 month programme comprises three placements, each one designed to build up strong personal and professional skills. Graduate programmes ensure you move into the area of business which matches your background, degree discipline which is right for you	At the end of the programme you will have a general overview of the business, a detailed understanding of a specific function, and the skills and qualifications needed to take the next step in your career	Technical opportunities in gas and electricity network development, maintenance and operations in UK. Commercial opportunities in trading, charging, strategy, business development, IS, property and contracts in UK
Engineering Training Programme	£22,800 (rising to £30,000 when you complete the programme)	Varies from 18-36 months depending on department	Two A levels (or A2) in Maths, Physics or Engineering (Grade A*-C); BTEC Level 3/Diploma/ONC/Merit or above HNC/HND/Degree in relevant engineering subject	A blend of off-the-job formal study (for the foundation degree) at one of our training centres, on-the-job training at your local site and field experiences at various operational sites	Foundation degree in relevant engineering subject area	Field based (outside) / office based in: Electricity; Gas; LNG (Liquefied Natural Gas) and Construction
Construction Engineer Training Programme	£17,600	Varies from 2-4 years depending on experience	<ul style="list-style-type: none"> 5 GCSE's including Maths and English Language (Grade A*-C) Engineering Diploma, Higher level (Grade A*-C) 	Half off-the-job formal study at one of our training centres, which is a mix of leadership and technical training, then half on-the-job training at your local site	<ul style="list-style-type: none"> HNC in Mechanical Engineering NVQ level 4 qualification in engineering Management Engineering Technician status with the Institute of Gas Engineers 	Mix of field and office based in Gas
Advanced Apprenticeship	£14,500 (rising to £22,000 when you complete the programme)	Varies from 3-4 years depending on department	<ul style="list-style-type: none"> 5 GCSE's including Maths and English Language (Grade A*-C) Engineering Diploma, Higher level (Grade A*-C) 	Half off-the-job formal study at one of our training centres, half on-the-job training at your local site	NVQ level 3 relevant to your job destination role	Field based (outside) in: Electricity; Gas; LNG (Liquefied Natural Gas)



Education & Skills
National Grid
National Grid House
Warwick Technology Park
Gallows Hill
Warwick
CV34 6DA

www.nationalgrideducation.com

Securing our energy supply for future generations

For more information go to our website
www.nationalgridcareers.com

